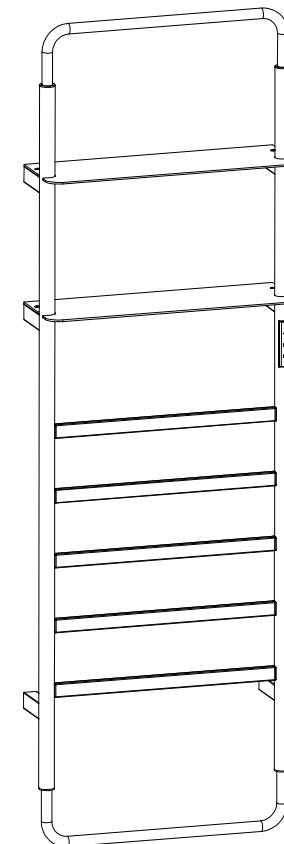


# LUSSO

**CELSIUS ELECTRIC HEATED TOWEL WARMER (DR06)**

**Installation & Maintenance Guide**



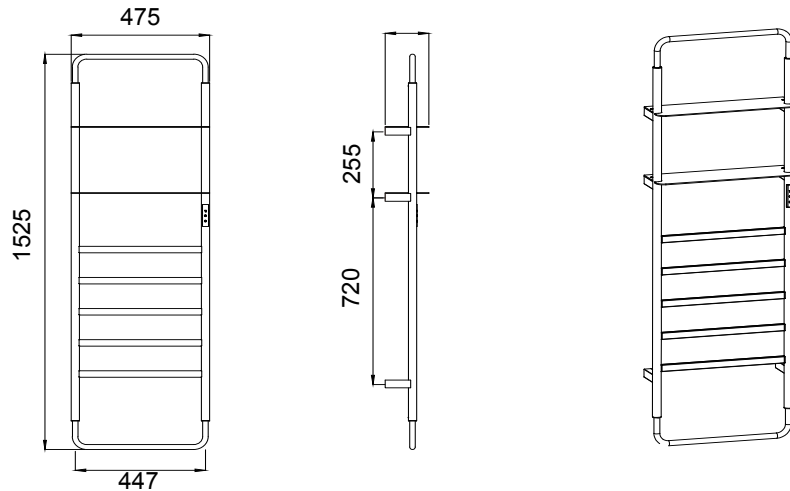
**Customer Care: 0203 370 4057 (Option 2)**  
**International: +44 203 370 4057 (Option 2)**

**PLEASE RETAIN THIS MANUAL  
FOR FUTURE USE**



# Important Information

- Please follow the installation and maintenance instructions provided within this guide - failure to do so could result in accident or loss at your own risk.
- The towel warmer must not be placed above a power socket or near flammable items such as curtains.
- To prevent injury to small children, the installation height of this towel warmer must not be lower than 600mm.
- To prevent overheating, the towel warmer must not be completely covered at any time.
- When not in use for a prolonged period, ensure that the towel warmer is switched off at the power source.
- Ensure that the power supply is consistent with the rated voltage shown on the electrical nameplate of the product.
- Do not hang any items on the towel warmer that weigh in excess of 10kg in total.
- In the unlikely event of a malfunction, switch off the power to the towel warmer immediately and contact our Customer Service team for assistance.






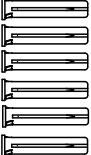
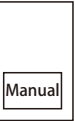
# Technical Specifications

<b>Power:</b>	150W
<b>Power Source:</b>	AC230V 50/60Hz
<b>Standby Power:</b>	<1W
<b>Temperature Setting / Display Range:</b>	45°C~70°C
<b>Working Temperature:</b>	0°C~70°C
<b>Loadable Power:</b>	<500W
<b>Thermistor:</b>	NTC Sensor
<b>Temperature Precision:</b>	±1°C
<b>Surface Temperature:</b>	45°C~70°C
<b>Waterproof Level:</b>	IPX4
<b>Button Type:</b>	Touch Button

# Maintenance Instructions

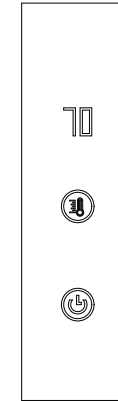
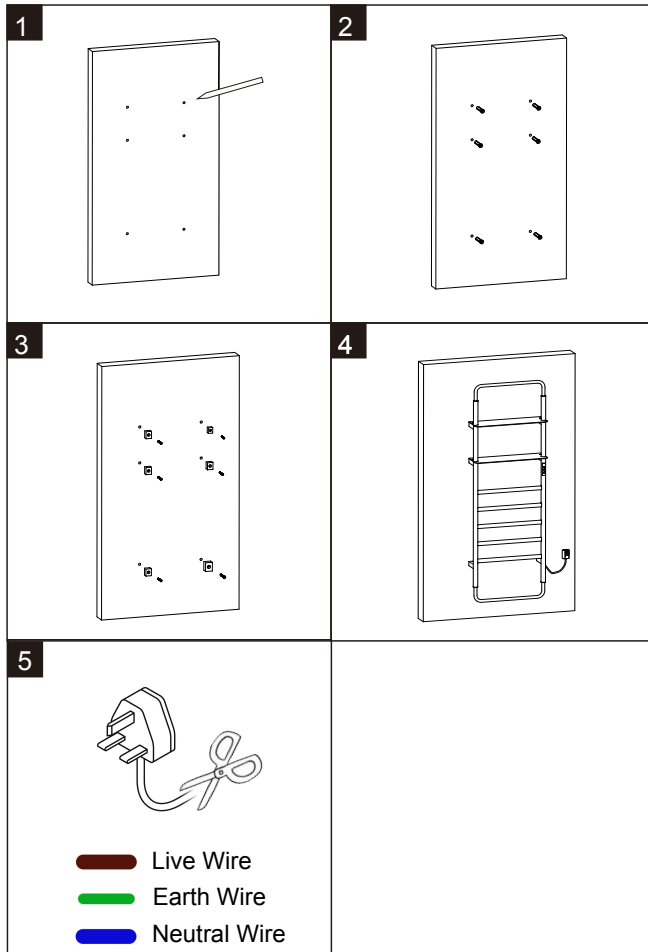
- Before carrying out any maintenance, please ensure that the towel warmer is switched off at the power source.
- To clean, gently wipe the towel warmer with a soft cloth.
- Do not wash the product with water and ensure that the inside of the towel warmer doesn't come into contact with any liquid.

## Product Kit Overview

<b>Heated Towel Warmer</b>  1 Piece	<b>Allen Key</b>  1 Piece	<b>Screws</b>  6 Pieces	<b>Wall Plugs</b>  6 Pieces	<b>Manual</b>  1 Piece
------------------------------------------------------------------------------------------------------------------------------	--------------------------------------------------------------------------------------------------------------------	------------------------------------------------------------------------------------------------------------------	----------------------------------------------------------------------------------------------------------------------	------------------------------------------------------------------------------------------------------------------

# Installation Instructions

1. Measure the distance between the product bracket and mark the drilling hole on the wall with a pencil.
2. Drill the holes using a 6mm drill bit, and insert the wall plugs into the holes.
3. Fit the mounting plate onto the wall.
4. Install the towel warmer and fix into place using the provided screws.
5. If the towel warmer needs to be pre-installed into the wall, remove the power plug and connect the wires inside the power cable.



## Power On

When the towel warmer is in standby mode, only the power button will be lit. To turn the towel warmer on, long press the power button until the temperature display is also lit.

## Set Temperature

To set the temperature of the towel warmer, press the settings button. Each press of the button will increase the temperature by 5°C, within the temperature setting range of 45~70°C. Once set, the heating function will automatically turn on when the towel warmer temperature is 2°C lower than the set temperature, and it will stop heating when the temperature is greater or equal to the set temperature.

## Schedule Power Off

While the power is on, press the power button to schedule a power off time between 1~24 hours. Once set, the system will begin the countdown to power off and the saved timing data can be used next time.

## Power Off

Long press the power button to turn off the towel warmer.

## Product Warranty

The Celsius Electric Heated Towel Warmer comes with a two-year free warranty from the date of purchase. This warranty is invalid where malfunction is caused by unauthorised disassembly, assembly, or repair, or if the product is dropped, suffers impact, is used in water, or is mishandled.