

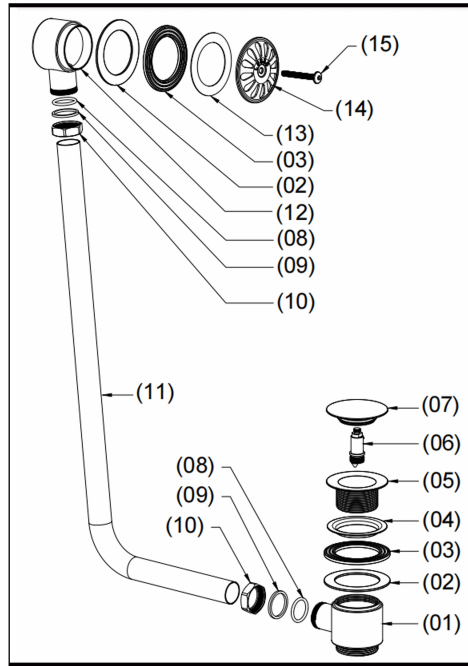
LUSSO

Low Profile Traditional Waste Kit (S1302)

Installation & Maintenance Guide

Contents

No.	Name	Quantity
1.	Waste trap	X 1
2.	Retaining plate	X 2
3.	Bottom seal washer	X 2
4.	Top seal washer	X 1
5.	Waste trap joint	X 1
6.	Pop up core	X 1
7.	Waste cap	X 1
8.	O ring	X 2
9.	Washer	X 2
10.	Nut	X 2
11.	Waste pipe	X 1
12.	Overflow fixing base	X 1
13.	Decorative plate	X 1
14.	Overflow dome	X 1
15.	Bolt	X 1



Installation

1. Unscrew the waste cap, pop up core and washers from the waste trap kit.
2. Fit the waste trap onto the bath and tighten by putting back the parts.
3. Take the waste pipe out and connect it to the trap and overflow kit without tighten.
4. Unscrew the bolt, decorative plate and dome on the overflow kit using the alley key provided.
5. Place the overflow base onto the bath and tighten by putting back the parts.
6. Tighten the waste pipe to the trap and overflow kit.
7. Check leaks and finish the installation.

MAINTENANCE INSTRUCTIONS

1. Rinse the surface with clean water or glass cleaner.
2. Dry with a soft cloth.
3. To remove surface marks, please use a neutral cleanser without coarse grained powder.

*The consumer needs to take responsibility for any damage caused by improper maintenance and using the incorrect cleaning products.

WARRANTY REQUIREMENTS

Please pay attention to below. Failure to do so will void your warranty.

1. Do not use acid cleansers
2. Do not use abrasive cleansers
3. Do not use abrasive cloths

