

MAINTENANCE INSTRUCTIONS

1. Rinse the surface with clean water or glass cleaner.
2. Dry with a soft cloth.
3. To remove surface marks, please use a neutral cleanser without coarse grained powder.

*The consumer needs to take responsibility for any damage caused by improper maintenance and using the incorrect cleaning products.

WARRANTY REQUIREMENTS

Please pay attention to below. Failure to do so will void your warranty.

1. Do not use acid cleansers
2. Do not use abrasive cleansers
3. Do not use abrasive cloths

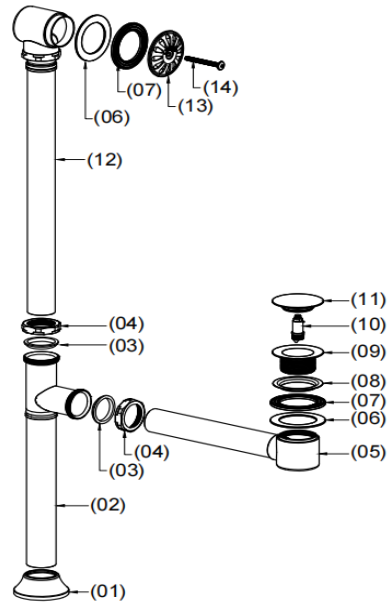
LUSSO

Universal Traditional Waste Kit (S1301)

Installation & Maintenance Guide

No. Name Quantity

- | | | |
|-----|-----------------------|-----|
| 1. | Decorative cover | X 1 |
| 2. | T-piece | X 1 |
| 3. | Conical rubber gasket | X 2 |
| 4. | Nut | X 2 |
| 5. | Waste trap | X 1 |
| 6. | Retaining plate | X 2 |
| 7. | Bottom seal washer | X 2 |
| 8. | Top seal washer | X 1 |
| 9. | Waste trap joint | X 1 |
| 10. | Pop up core | X 1 |
| 11. | Waste cap | X 1 |
| 12. | Overflow pipe | X 1 |
| 13. | Overflow dome | X 1 |
| 14. | Bolt | X 1 |



Installation

1. Instal the waste and trap.

Unscrew the waste cap, pop up core and washers from the waste trap.

Fit the waste and trap onto the bath.

Place conical rubber gasket and nut onto the trap.
2. Instal T-piece.

Cut the waste pipe on the T-piece to the required size.

Place the decorative cover onto the waste pipe.

Connect the T-piece to the trap.
3. Instal the overflow set.

Unscrew the bolt, dome and washers using the Allen key provided.

Instal the overflow set onto the bath and tighten the bolt.

Place conical rubber gasket onto the pipe.

Tighten the nuts on the T-piece and check for leaks.

