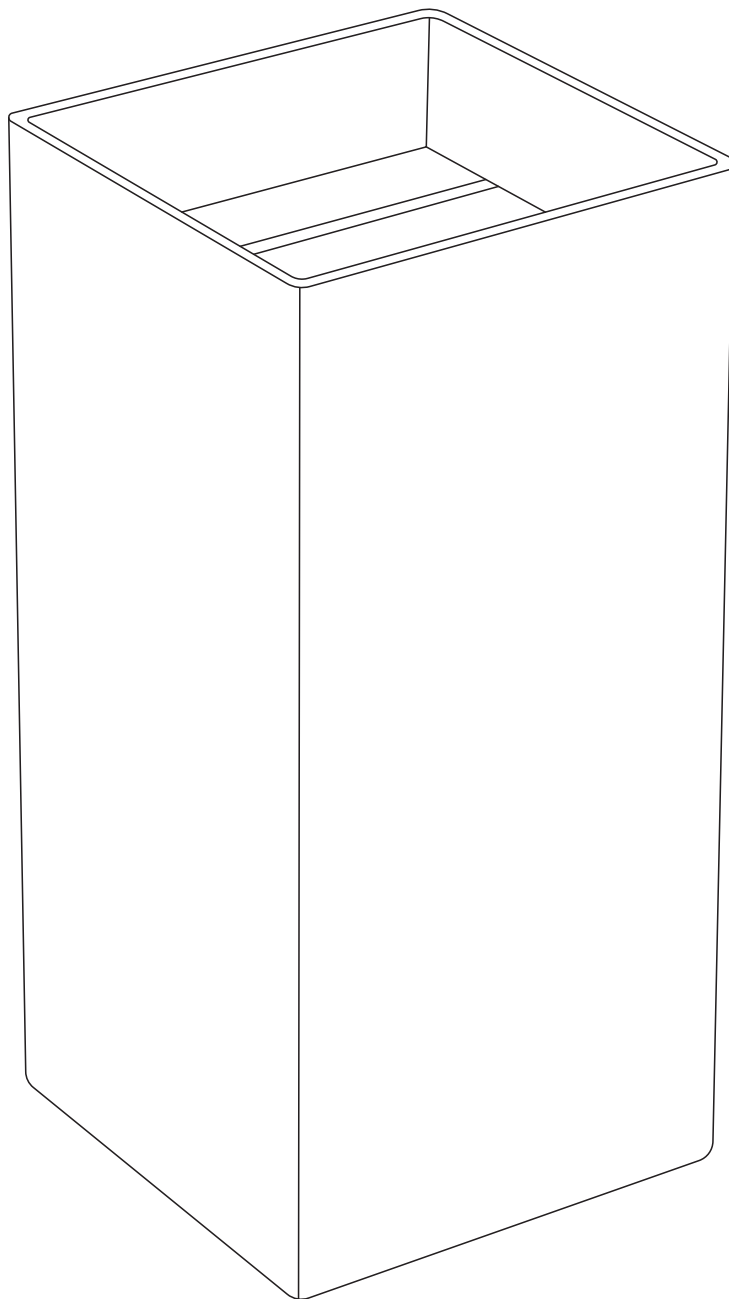


CONCRETE

FREESTANDING BASIN



EN
INSTALLATION AND
CARE GUIDE

Please retain for future reference

LUSO

INTRODUCTION

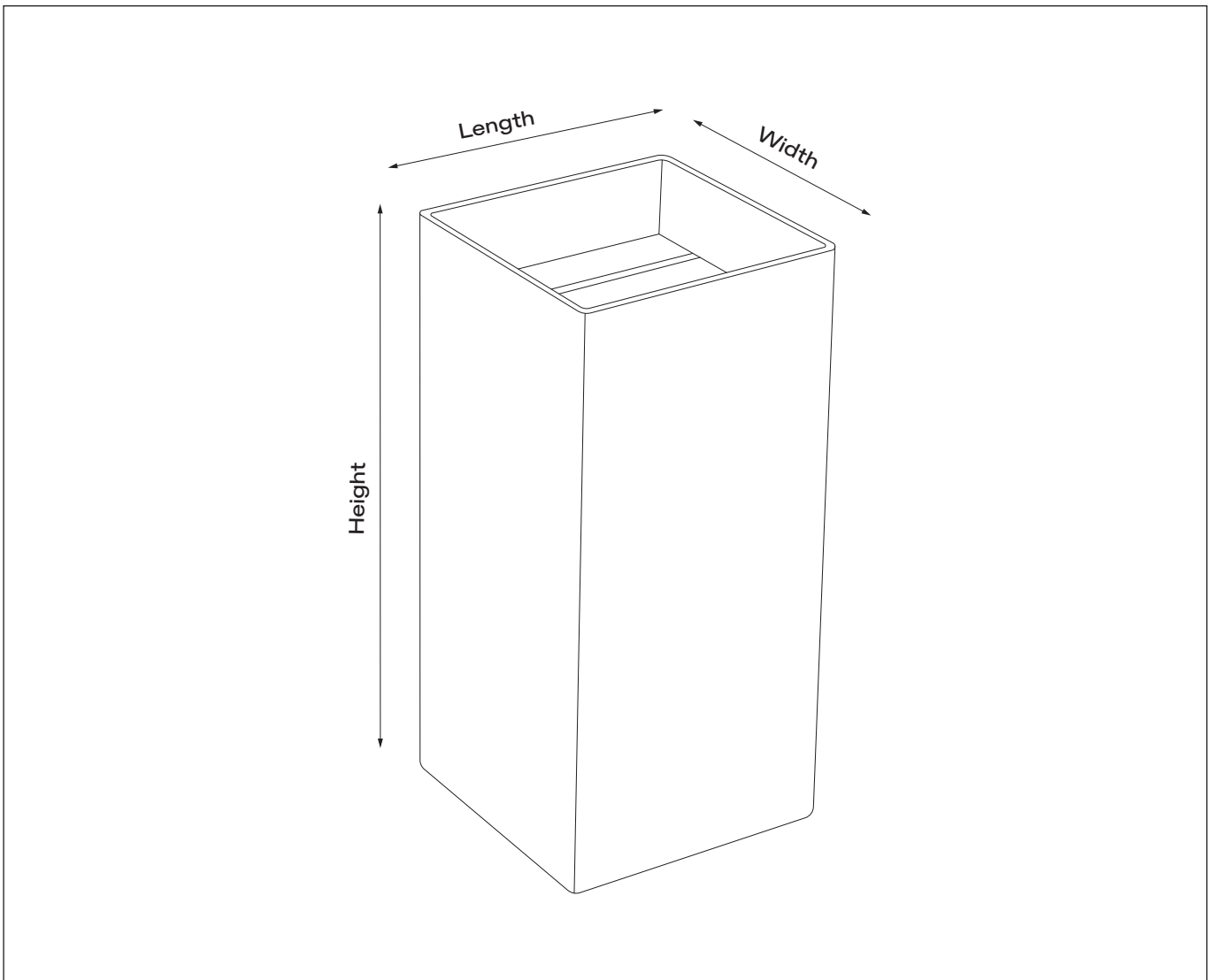
Thank you for purchasing the Lusso Concrete Freestanding Basin.

Please read this guide carefully before installing, using and cleaning this product, and retain it for future reference.

If you have any queries in relation to this product or guide, please contact our Customer Service team on 020 3370 4057.

PRODUCT KIT

A Basin

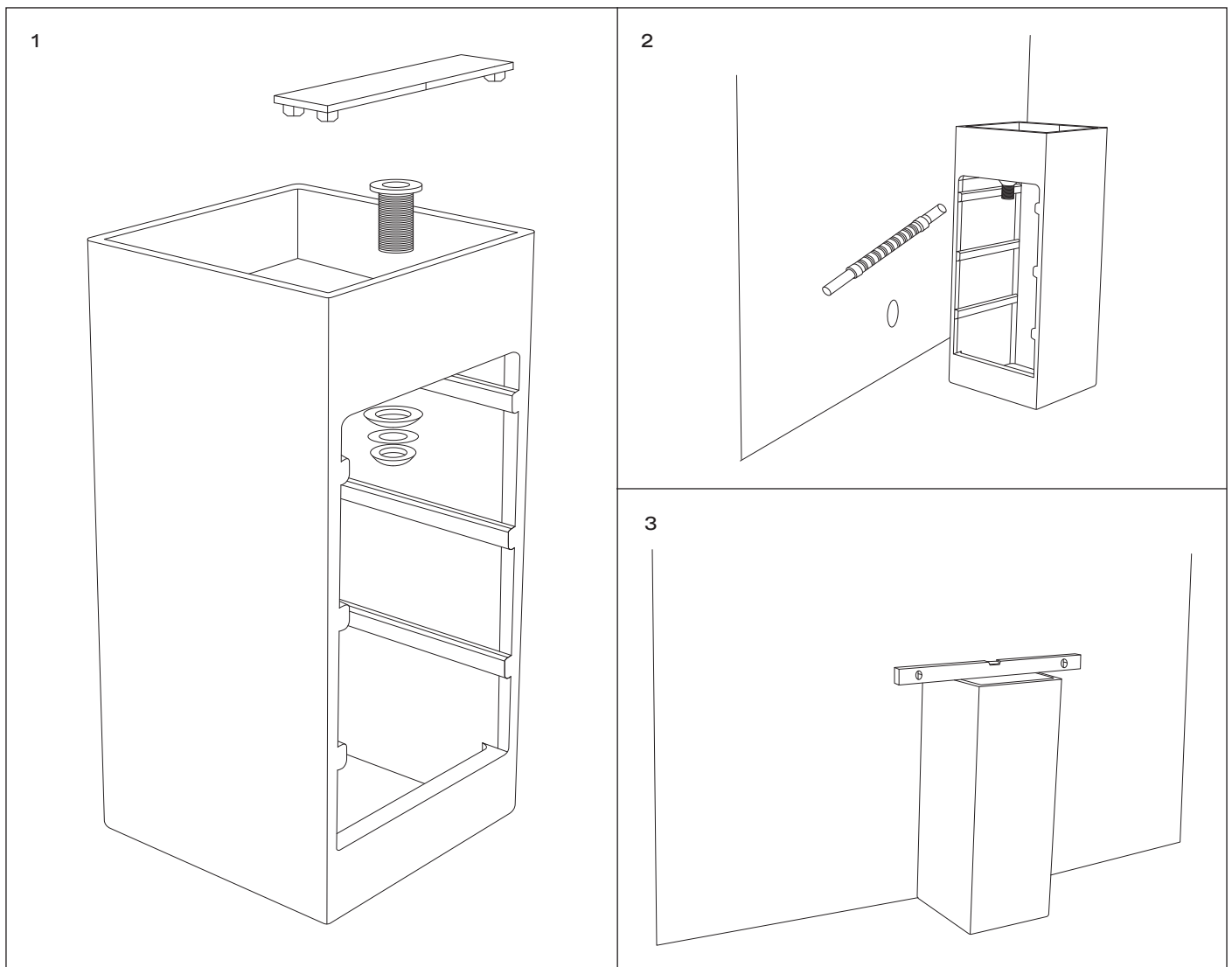


INSTALLATION STEPS

Before installation, please note that this basin is designed for floor mounting only, and we recommend that the basin is installed by a fully qualified plumber.

Prior to following the steps below, please also observe all local plumbing and building codes, inspect the waste and plumbing (replacing if necessary), and check the dimensions of the basin.

- 1 Install the basin waste and trap.
- 2 Connect the basin to the waste system.
- 3 Position the basin into place, using a spirit level to ensure it's properly lined up.



CARE INSTRUCTIONS

To clean and maintain the flawless finish of this product, please follow the below instructions. Improper maintenance will void your product guarantee.

- ✓ Clean using warm, soapy water
- ✓ Dry with a soft cloth
- ✓ Treat the basin with specially formulated wax every six months

- ✗ Do not use acidic cleansers
- ✗ Do not use wire brushes, abrasive cleansers or cloths
- ✗ Do not use hard or sharp objects to scratch the surface of the basin

Go to Lusso.com to activate your guarantee.

LUSO

Customer Care: 020 3370 4057

International: +44 20 3370 4057